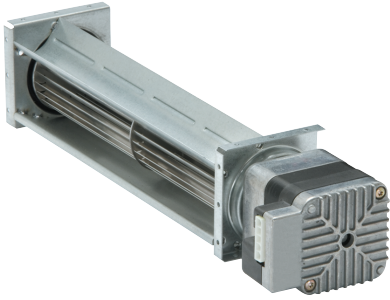


QL4/3000-2212

EC tangential blower

forward-curved



ebm-papst Landshut GmbH

Hofmark-Aich-Straße 25

D-84030 Landshut

Phone +49 (0) 871 707-0

Fax +49 (0) 871 707-465

info3@de.ebmpapst.com

www.ebmpapst.com

Nominal data

Type	QL4/3000-2212	
Nominal voltage	VDC	24
Speed (rpm)	min ⁻¹	2200
Power consumption	W	7
Min. ambient temperature	°C	0
Max. ambient temperature	°C	60
Air flow	m ³ /h	130
Pressure increase	Pa	15

ml = Max. load · me = Max. efficiency · fa = Free air · cs = Customer specification · ce = Customer equipment
Subject to change



Technical description

Weight	0.75 kg
Dimensions	40 mm
Degree of protection	IP20
Insulation class	"F"
Installation position	Horizontal or vertical with motor on bottom

Product drawing

